



PioneerPOS

Stealth S-Line

User Manual

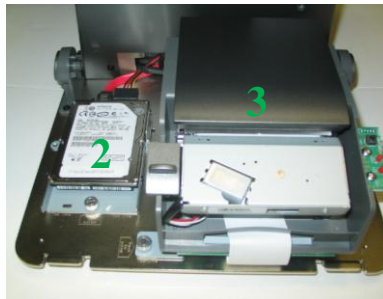
TABLE OF CONTENTS

1. PRODUCT OVERVIEW	2
2. STEALTHTOUCH ALL-IN-ONE TOUCHSCREEN COMPUTER	2
3. HARD DISK DRIVE SET	3
3.1 REMOVING/CHANGING HARD DISK DRIVE	3
4. PRINTER	4
4.1 PRINTER SPECIFICATION	4
4.2 PRINTER OVERVIEW	5
4.3 PRINTER SETUP & REPLACEMENT	6
4.4 PRINTER MAINTENANCE	9
4.4.1 SELF TEST PRINT	
4.4.2 HEXADECIMAL DUMP	
4.4.3 LED INDICATOR	
5. TROUBLESHOOT	11

1. Product Overview

Stealth S-Line terminal consists of three major components:

1. StealthTouch all-in-one touchscreen computer
2. 2.5" Hard disk drive set
3. S-line thermal printer



2. StealthTouch All-in-one Touchscreen Computer

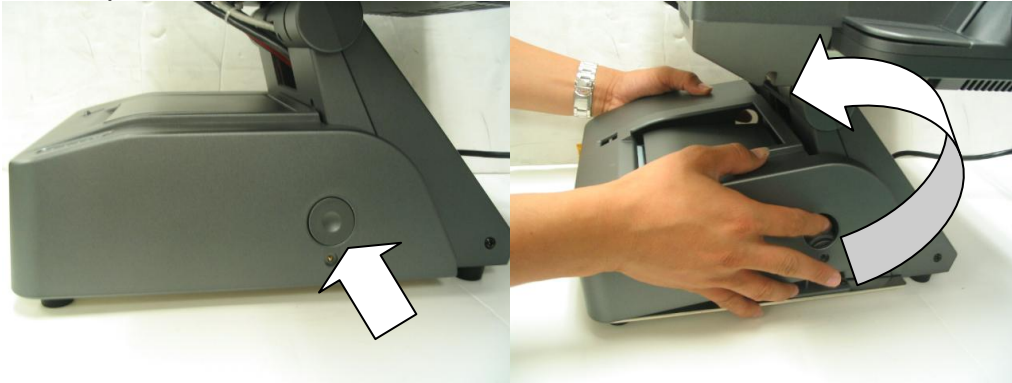
For StealthTouch touchscreen computer maintenance and troubleshoot, please refer to *StealthTouch Computer User Guide*.

3. Hard Disk Drive Set

The harddisk drive bay on S-line base unit accommodates one 2.5" laptop type harddisk.

3.1 Removing/Changing hard disk drive

1. Remove printer cover by first pressing on buttons on both sides of cover, then lift cover up towards user.



2. Unscrew thumbscrew. And slide out HDD set.



3. Disconnect SATA and power cable.



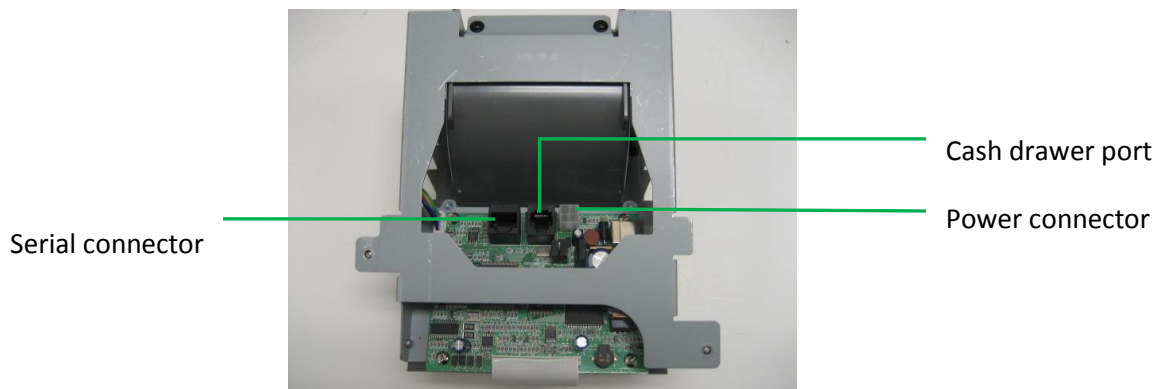
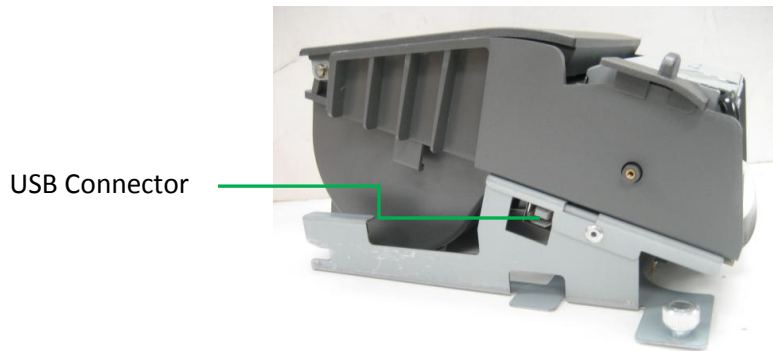
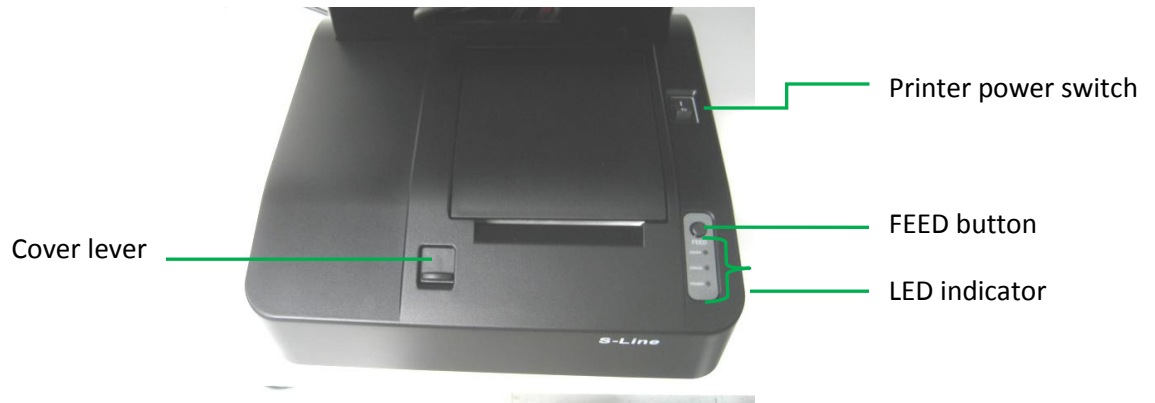
4. Replace with a new HDD set and reverse Step 1~3 to install.

4. Printer

4.1 Printer Specification

Item	Specification
Model	STLH-TP60
Print method	Direct Thermal
Paper	Width: 80 mm (3.125") Roll diameter: 80 mm (3.125")
Print width	72.19 mm (2.84")
Print speed	150 mm/s (5.9"/sec)
Interface	Serial / USB
Cash drawer	Support up to 2 cash drawers (6-pin RJ11 connector)
Cutter	Guillotine Jam free auto-cutter Full/Partial cut option
Driver	Windows, OPOS, Epson Esc/POS
Reliability	Auto cutter life: 1,000,000 cut Thermal print head life: 100 km (62 miles)

4.2 Printer Overview



4.3 Printer Setup & Replacement

The S-line terminal will come with printer pre-setup based on part number (ie serial or USB type). No additional set up step is required, other than installing OPOS or Windows driver, if required.

Loading paper roll

1. Push lever upward to open cover



2. Insert paper roll and pull some excess paper out

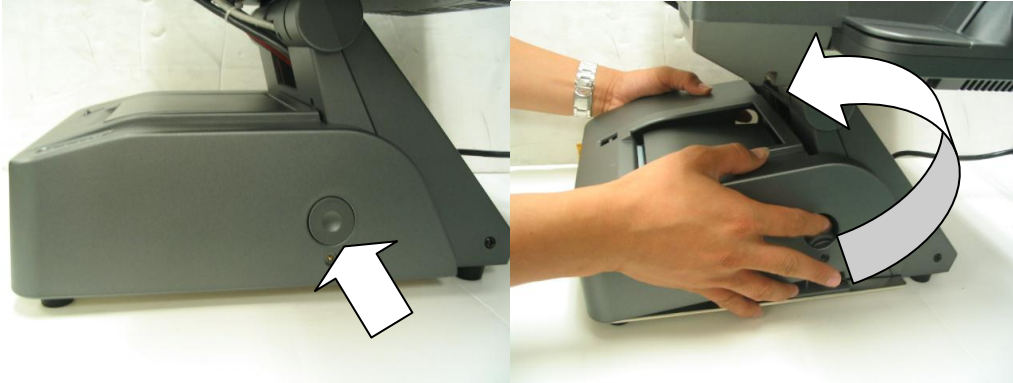


3. Close printer cover, printer will auto cut excess paper.

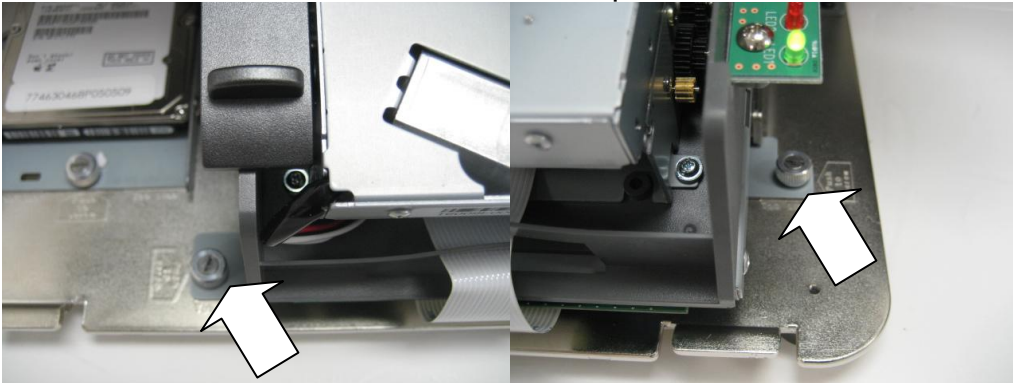


Printer removal

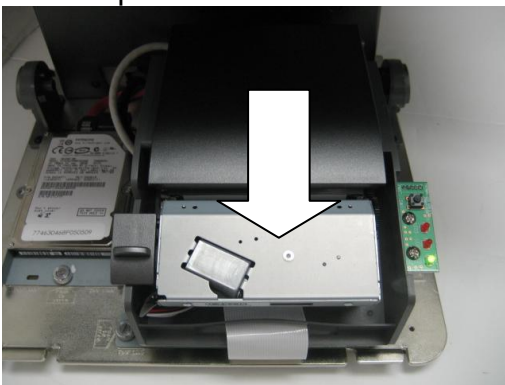
1. Remove printer cover by first pressing on buttons on both sides of cover, then lift cover up towards user.



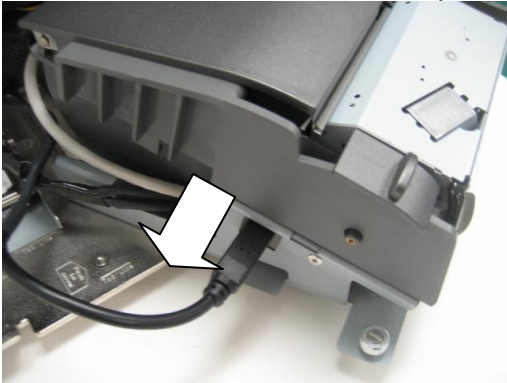
2. Unscrew thumb screws on both sides of printer



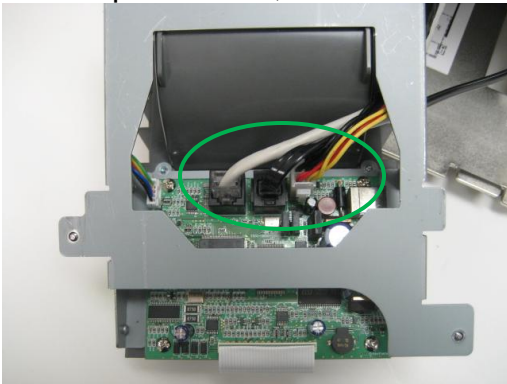
3. Slide printer out in user direction



4. Disconnect USB cable from printer, if any.



5. Turn printer over, disconnect rest of cables to take out printer.

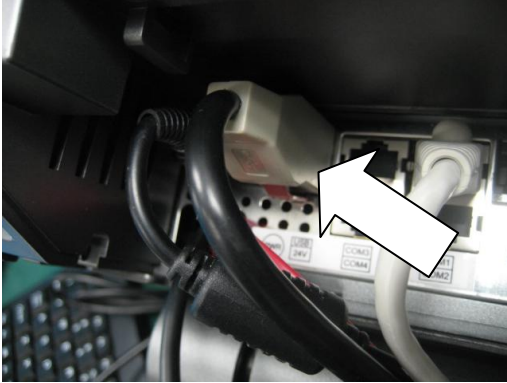


6. Replace with a new printer and reverse Step 5 → 1 to install printer.

4.4 Printer Maintenance

4.4.1 Self test Print

1. Power off printer by disconnecting Power USB connector from I/O port.
or
Power off printer by turning off switch on printer (above LED indicator)



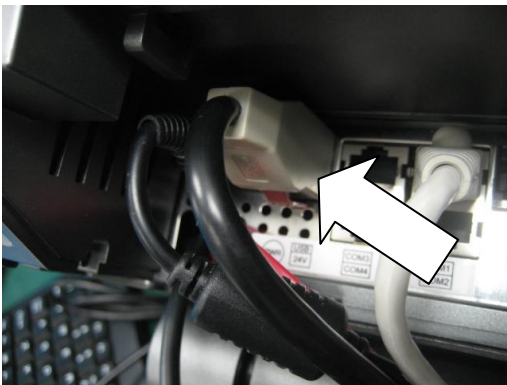
or



2. While pressing down the FEED button, reconnect the Power USB connector / turn on printer power switch.
3. All LED will illuminate, and printer will enter test mode.
4. First printout will show printer configuration.
5. Press FEED button again to do self test print.
6. Printer will resume online as soon as it completes self test.

4.4.2 Hexadecimal Dump

1. Power off printer by disconnecting Power USB connector from I/O port.
or
Power off printer by turning off switch on printer (above LED indicator)



or



2. While pressing down the FEED button, reconnect the Power USB connector / turn on printer power switch..
3. Continue to hold FEED button for another ~5 second (Error and Power LED will illuminate) before releasing button.

4. Printer will enter hexadecimal dump mode.
5. Printer will print the following:

Hexadecimal printing mode.....

6. To exit hex dump mode, cycle power of printer by disconnecting and reconnecting Power USB connector to exit Hex dump mode.

4.4.3 LED Indicators

LED	LED status: X = off, √ = on				
Paper (RED)	X	X	√	√	X
Error (RED)	X	X	√	√	√
Power (GREEN)	X	√	√	√	√
Printer Status	Offline	Online	Paper cover open	Paper empty	Test mode
Note			Continuous beep	Continuous beep	Blinking GREEN LED

5. Troubleshoot

Paper jam/Cutter won't retract

1. Reset printer power by toggling printer power switch or disconnecting Powered USB connector on I/O ports and reconnect them.
3. Cutter will auto retract.
3. Open printer cover to clean excessive paper, if required.

Printer beeps continuously

1. Open printer cover.
2. Check if paper is properly inserted or paper has run out.

Powered USB connector is connected but printer is offline

1. Remove printer cover.
2. Unscrew thumb screws located on sides of printer.
3. Remove printer from base unit.
4. Flip printer over to check cables connection.
5. Disconnect and reconnect cables to ensure they are properly connected.

Printer is online but does not print

1. Remove printer cover.
2. Unscrew thumb screws located on sides of printer.
3. Remove printer from base unit.
4. Flip printer over to check cables connection.
5. Disconnect and reconnect cables to ensure they are properly connected.

Product by



Pioneer POS Inc.
touchscreen solutions

238 Benton Ct., City of Industry, CA 91709

Tel: 888-468-9757

Fax: 909-468-9557

Web: www.pioneerpos.com

e-mail: sales@pioneerpos.com / support@pioneerpos.com

Version control

Rev	Descriptions	Date	Author
1.0	New document	07/01/2009	JT
1.1	Updated spec	09/16/2009	JT
1.2	Updated with switch model	04/23/2010	JT