

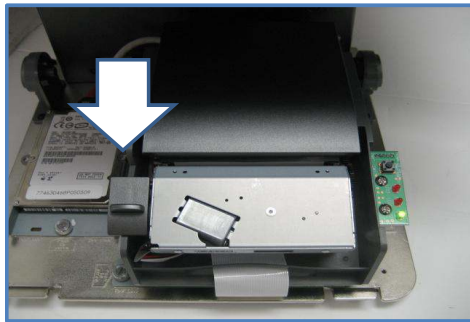
S-Line Printer - Changing Serial to USB setting



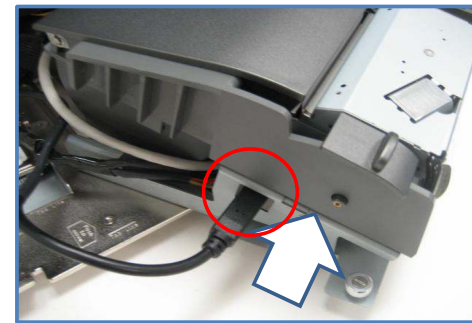
1. Remove printer cover by first pressing



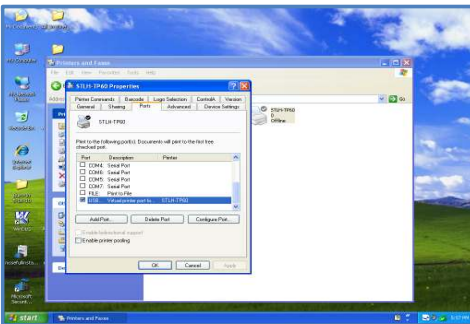
2. Lift the cover up towards user.



3. Locate USB cable.



4. Connect USB cable to printer,
5. Then close the base cover and turn the system on.



6. In desktop go to **Start - Settings and Control Panel**.
7. From Control panel select **Printers and Faxes** and double clicks on printer driver.
8. Click on **Printer, Properties** and select **Ports** tab and change printer Ports to USB.

Note : If changing printer driver to USB not working or have error, then un-install the printer driver and re-install it with USB selection.